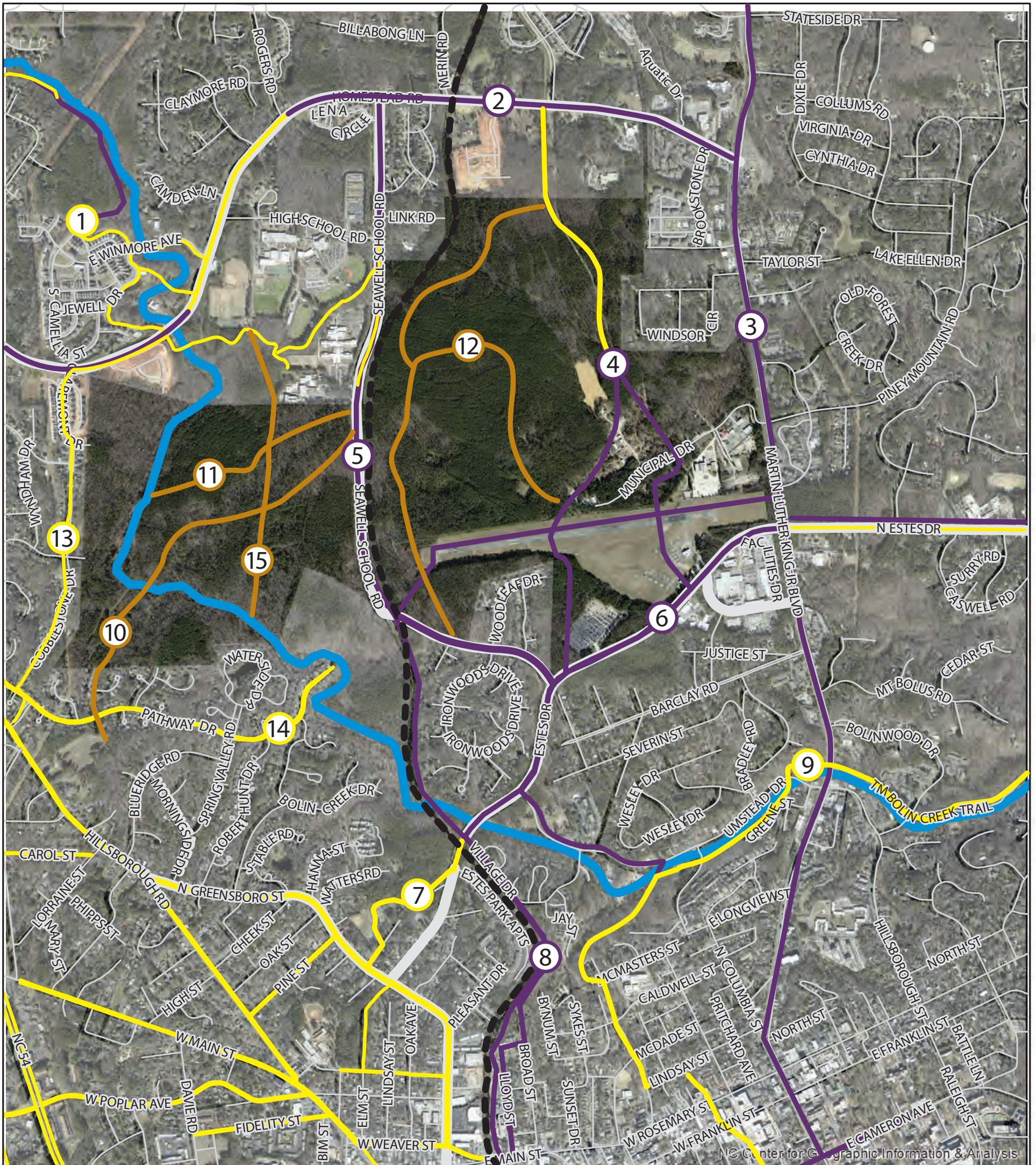


# Upper Bolin Creek Watershed Bikeway Connections

November 2022



## Legend

- Existing Bikeways
- Proposed Bikeways
- Streets
- Natural Surface Trail
- - - Railroad Tracks

## Key to Planned Bikeways

- |   |  |
|---|--|
| <ul style="list-style-type: none"> <li>① Homestead-Chapel Hill High School Multi-Use Path</li> <li>② Homestead Road Bike &amp; Pedestrian Enhancements</li> <li>③ MLK Jr. Boulevard Bikepaths</li> <li>④ Carolina North Bicycle Connector</li> <li>⑤ Seawell School Road Bikelanes or Multi-Use Path</li> <li>⑥ Estes Drive Bikelanes and Multi-Use Path</li> <li>⑦ Wilson Park Bikeway/Greenway</li> <li>⑧ Campus-to-Campus Bicycle Connector</li> </ul> | <ul style="list-style-type: none"> <li>⑨ Bolin Creek/Tanyard Branch Paved Trails</li> <li>⑩ Carolina North Tripp Farm Road Connector</li> <li>⑪ Seawell School Road to Bolin Creek Northern Route</li> <li>⑫ Pumpkin Loop, Off-Road Carolina North Unpaved Trails</li> <li>⑬ Cobblestone Bike Boulevard Northbound</li> <li>⑭ Multiple Bike Boulevard Routes</li> <li>⑮ Powerline Trail</li> </ul> |
|---|--|